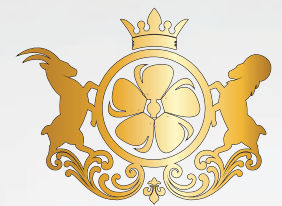




www.centennialstates.ca



MILLSTONE HOMES
OF LONDON



WELCOME TO CENTENNIAL ESTATES



Here in Aylmer you will find the ideal balance of affordability and luxury living in a tranquil, small-town setting. Just 15 minutes from the picturesque shores of Lake Erie, this site is nestled in a family-friendly neighbourhood with close access to the Centennial Estate Park, a natural space for recreation, relaxation, and a seamless connection to the outdoors.

Enjoy the convenience of living in a location where all your shopping and daily needs are easily accessible. Our meticulously planned site offers a variety of home styles, including bungalows and two-story residences. Each home features a double garage, seamlessly blending functionality with a touch of luxury.

Choose from a variety of lot sizes to match your vision, providing plenty of space to design your dream home. Whether you prefer a bungalow's charm or a two-story home's versatility, you have the freedom to design your ideal living space. Make your backyard an oasis for unwinding, entertaining, and cherishing life's special moments.





Luxury shower
En-suite

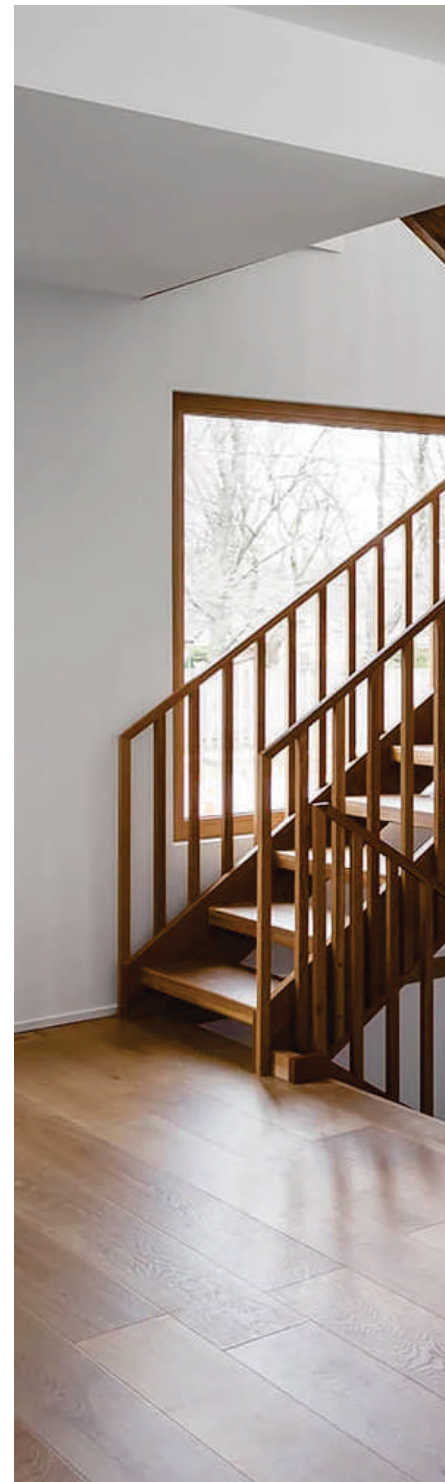


Interlocking
stone
driveway



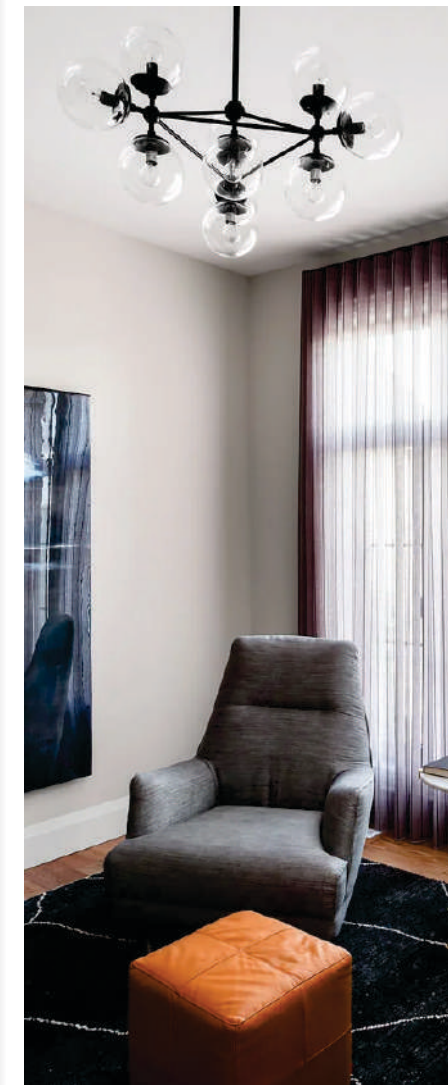
Upgraded
Kitchen
Cabinetry

Hardwood
floors



Raven Modern
Tilt & Turn
Windows and Doors

9 feet smooth
ceiling on
the main floor





Experience the traditional and contemporary home design at Centennial Estate in Aylmer, where functionality, space, and comfort take center stage.

Enjoy open-concept living at its finest, with the living room seamlessly transitioning into the dining and kitchen areas, creating a cohesive communal space.

Large European windows flood the interiors with natural light, while beautiful backyard spaces are ideal for unwinding and enjoying your evenings.





Serene Bedrooms & Washrooms

Relax and unwind in your peaceful primary suite. Enjoy the warmth of natural light from extra-large windows.

Retreat to your calming ensuite, complete with tiled flooring and a ceramic sink admired for its smoothness and durability, placed perfectly on a custom-made vanity. and an upgraded tiled walk-in shower with a glass door.





ESTATES



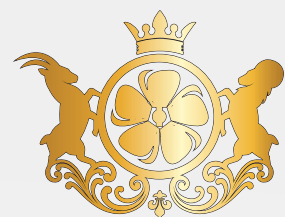
Discover your ideal space from a variety of lot options:

Lots ranging in width from 45 to 70 feet.

Enjoy the spaciousness of lots ranging in depth from 110 to 170 feet.

Embrace the uniqueness of large pie-shaped lots.

Enjoy the peace and quiet of lots that back onto picturesque farmland.



MILLSTONE HOMES
OF LONDON





- | 15 minutes to the scenic Port Bruce
- | 15 minutes to St Thomas, home to the upcoming Volkswagen battery plant
- | 20 minutes to Highway 401
- | 30-minute to the city of London
- | Close proximity to the famous Port Stanley, adding a touch of local charm to your surroundings





KNOW YOUR BUILDER

Millstone Homes sets the standard for luxury custom homebuilding with a thoughtfully resource-efficient approach. Carefully crafted with over two decades of excellence and innovation, we build with you in mind. As truly custom homebuilders, we have tailored the entire design and build process to your unique vision and lifestyle, providing beautiful homes for intelligent living with quality craftsmanship at an exceptional value.

PROVEN BY A TRACK RECORD OF SUCCESS.

PAST DEVELOPMENTS FROM THE TEAM BRINGING YOU CENTENNIAL ESTATE



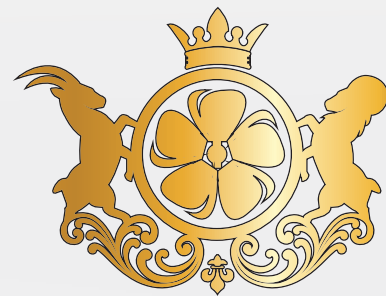
SALES INQUIRIES



AMIT AIRI
BROKER
519-623-0000
info@amitairi.com


TEAM AMIT AIRI

Re/Max Real Estate Centre, Inc Brokerage
766 Old Hespeler Rd Cambridge ON N3H 5L8
519-623-6200



**MILLSTONE HOMES
OF LONDON**

www.centennialstates.ca

Renderings shown are artist's concept and may include upgraded or unavailable features. Interior design used for illustrative purposes only.
See list of included features for details or speak with our sales representative for more details E.A.O.E.