

# GOLD FIELD

MODERN TOWNS



[www.millstonehomes.ca](http://www.millstonehomes.ca)



**MILLSTONE HOMES**  
OF LONDON





All material presented herein is intended for information purposes only. While this information is believed to be correct it is represented subject to errors, omissions, changes, or withdrawal without notice.



## Welcome to GOLDFIELD

Millstone Homes is a name synonymous with impeccable design, unmatched craftsmanship and exceptional quality.

GOLDFIELD community is bringing luxury living to Southwest London with back to back custom townhomes that are a perfect blend of magnificence, modern living, style and affordability.

Experience the excellence of design and innovation, the opulence of contemporary lifestyle and the grandeur of seamless living in London ON.



**MILLSTONE HOMES**  
OF LONDON





All material presented herein is intended for information purposes only. While this information is believed to be correct it is represented subject to errors, omissions, changes, or withdrawal without notice.

### **MODERN ELEVATION**

A Striking Fusion of Brick, Stucco, and Accent Siding for a Modern touch.

### **RAVEN EUROPEAN WINDOWS**

Tilt & Turn windows offer superior quality, security, energy efficiency and unobstructed views.

### **SPACIOUS BALCONIES**

Private balconies with privacy clear glass for functionality and comfortable outdoor living.

### **INSULATED GARAGE DOOR**

Enhanced Comfort and Energy Efficiency for Your Home

### **COVERED PORCH**

Extend a Warm welcome to your guest in style.

### **STYLISH FRONT DOOR**

High quality Front Door with Titan i6 secure lock.





Actual usable floor space may vary from the stated floor areas. Renderings shown are artist's concept and may include upgraded, unavailable, or furniture features. Interior & exterior design used for illustrative purposes only. E. & O.E. 2024



**MILLSTONE HOMES**  
OF LONDON

The modern design of GOLDFIELD towns prioritizes functionality, space and comfort. Experience open-concept living at its best, as the living room seamlessly flows into the dining and kitchen areas, forming a cohesive communal space. Expansive European windows flood the interiors with abundant natural light, while the balconies offer a perfect spot to unwind and enjoy your evenings.



## Light and Dark Grey interior package

An elegant blend of versatile tones for timeless sophistication. Contrasting light and graphite grey kitchen cabinetry coupled with light wood-toned floors, infuses warmth and comfort.



### Featuring:

- Light Grey Stained Cabinetry
- White Empire Quartz Counter Tops
- Graphite Grey Kitchen Island
- White, Subway Tile Backsplash
- Soft-Close Doors & Drawers
- Contrasting Black Hardware

Actual usable floor space may vary from the stated floor areas. Renderings shown are artist's concept and may include upgraded, unavailable, or furniture features. Interior & exterior design used for illustrative purposes only. E. & O.E. 2024





## White and Oak Interior Package

A fusion of clean elegance and natural warmth: Alpine white kitchen cabinet and wood toned flooring harmonize for a welcoming and stylish ambiance.



Actual usable floor space may vary from the stated floor areas. Renderings shown are artist's concept and may include upgraded, unavailable, or furniture features. Interior & exterior design used for illustrative purposes only. E. & O.E. 2024



### Featuring:

- Alpine White Stained Oak Cabinetry
- Platinum Grey Quartz Counter Tops
- White, Subway Tile Backsplash
- Natural Argon Kitchen Island
- Soft-Close Doors & Drawers
- Contrasting Black Hardware



## Serene Bedrooms & Washrooms

Relax and unwind in your peaceful primary suite. Enjoy the warmth of natural light from extra-large windows.

Retreat to your calming ensuite, complete with tiled flooring and a ceramic sink admired for its smoothness and durability, placed perfectly on a custom-made vanity. and an upgraded tiled walk-in shower with a glass door.



**MILLSTONE HOMES**  
OF LONDON

Actual usable floor space may vary from the stated floor areas. Renderings shown are artist's concept and may include upgraded, unavailable, or furniture features. Interior & exterior design used for illustrative purposes only. E. & O.E. 2024







GROUND LEVEL



MAIN LEVEL



UPPER LEVEL

Actual usable floor space may vary from the stated floor areas. Renderings shown are artist's concept and may include upgraded, unavailable, or furniture features. Interior & exterior design used for illustrative purposes only. E. & O.E. 2024

# DREAMWOOD

**INTERIOR UNIT**  
TOTAL SQ FT 1,650



2 Bed



2.5 Bath

Block D

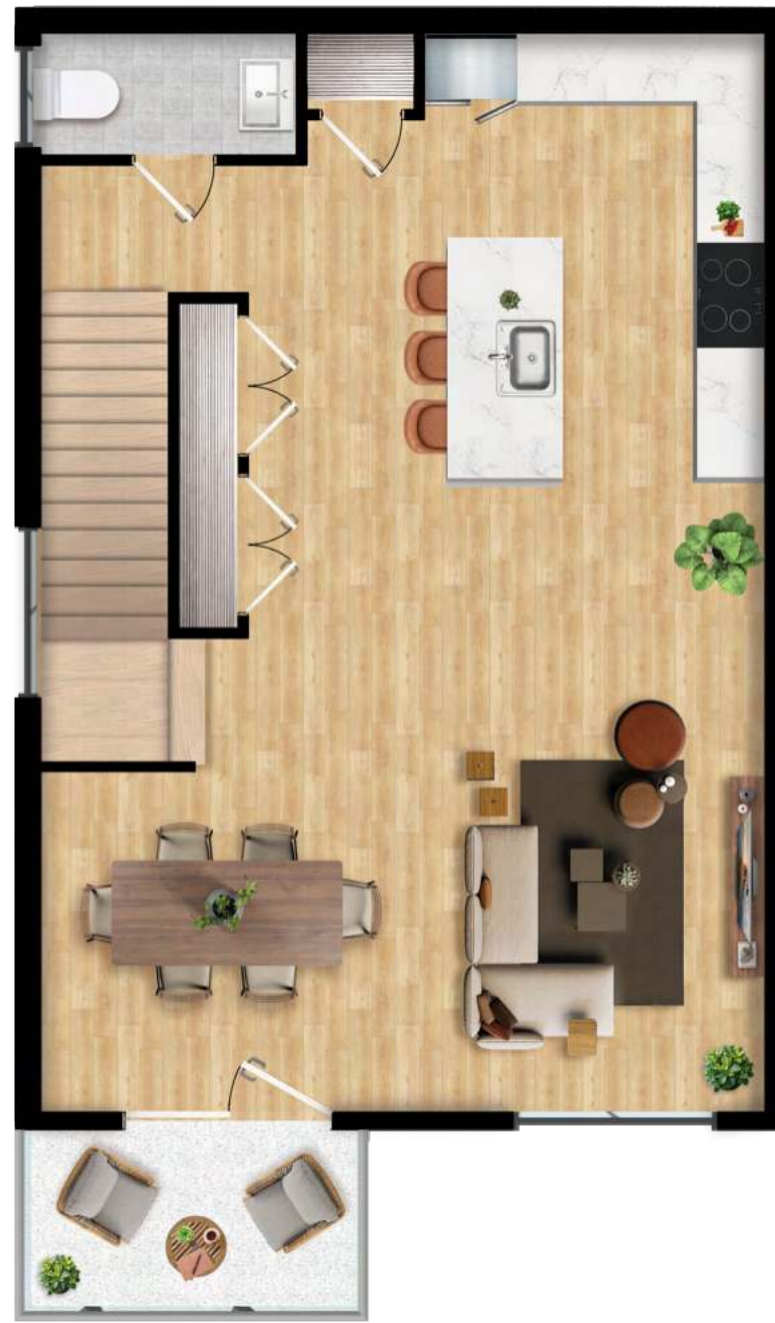


**MILLSTONE HOMES**  
OF LONDON





GROUND LEVEL



MAIN LEVEL



UPPER LEVEL

Actual usable floor space may vary from the stated floor areas. Renderings shown are artist's concept and may include upgraded, unavailable, or furniture features. Interior & exterior design used for illustrative purposes only. E. & O.E. 2024

# STARLIGHT

**END UNIT**  
TOTAL SQ FT 1,668



2 Bed



2.5 Bath

Block D



**MILLSTONE HOMES**  
OF LONDON





GROUND LEVEL



MAIN LEVEL



UPPER LEVEL

Actual usable floor space may vary from the stated floor areas. Renderings shown are artist's concept and may include upgraded, unavailable, or furniture features. Interior & exterior design used for illustrative purposes only. E. & O.E. 2024

# STARLIGHT

**SUPER ENHANCED END UNIT**

TOTAL SQ FT 1,668



2 Bed



2.5 Bath

Block D



**MILLSTONE HOMES**  
OF LONDON





GROUND LEVEL



MAIN LEVEL



UPPER LEVEL

Actual usable floor space may vary from the stated floor areas. Renderings shown are artist's concept and may include upgraded, unavailable, or furniture features. Interior & exterior design used for illustrative purposes only. E. & O.E. 2024

# ARCADIA

**INTERIOR UNIT**  
TOTAL SQ FT 1,662

 3 Bed
  2.5 Bath

Block B & C







GROUND LEVEL



MAIN LEVEL




UPPER LEVEL


Actual usable floor space may vary from the stated floor areas. Renderings shown are artist's concept and may include upgraded, unavailable, or furniture features. Interior & exterior design used for illustrative purposes only. E. & O.E. 2024

# TWILIGHT

**END UNIT**  
TOTAL SQ FT 1,683



3 Bed



2.5 Bath

Block B & C







GROUND LEVEL



MAIN LEVEL



UPPER LEVEL

Actual usable floor space may vary from the stated floor areas. Renderings shown are artist's concept and may include upgraded, unavailable, or furniture features. Interior & exterior design used for illustrative purposes only. E. & O.E. 2024

# TWILIGHT

**SUPER ENHANCED END UNIT**  
TOTAL SQ FT 1,683

 3 Bed
  2.5 Bath

Block B & C





# FEATURES & FINISHES

## INTERIOR

- Choice of two professionally curated interior packages
- 9' Smooth ceilings on main level and 8' ceilings on upper level
- Luxury vinyl plank flooring (LVP) on main level and bedrooms
- Tile on ground level foyer area
- European Tilt and Turn windows
- Fine-grained Poplar stairs
- Stunning 7.3' front door

## KITCHEN

- Polished quartz counters with under mount stainless steel sink
- Tiled subway style backsplash
- Egger finish cabinetry with soft-close doors and/or drawers
- Polished chrome pull-down high arc faucet
- Stylish black hardware.

## BATHROOM

- Ceramic Sink
- 12" x 24" wall and floor tiles
- Shower floor: 2 x 2 Mosaic
- Custom floating vanities by Elite Kitchen designs
- Walk-in shower with glass sliding door in Ensuite
- Acrylic bathtub in the main bathroom

## LIGHTING & ELECTRICAL

- Pot lights in Kitchen, Living and dining areas (as per plan)
- 100-AMP service panel with breakers
- Smoke alarm and carbon monoxide detectors
- Preselected light fixtures from The Lighting Shoppe
- TV ready wall in living room (includes Cable/Cat 5E connection and two receptacles)

## MECHANICAL & PLUMBING

- High Efficiency 2-way gas furnace and 14 seer air conditioner.
- Heat Recovery Ventilator (HRV)
- High efficiency gas water heater. (Purchaser to sign rental agreement with utility company)
- Water saving high volume toilets.

## NOTES

- All selections are to be made from interior design packages provided by the Vendor
- Purchaser acknowledges that the floor plan may be reversed
- The number of steps at the front may vary from that shown and are subject to grade
- The decorated model home, virtual reality, marketing floor plans and images/renderings contain some items not included in the base price
- Plans and specifications are subject to modification at the discretion of the Vendor



**GOLDFIELD**  
COMMUNITY

Welcome to GOLDFIELD modern living in a unique community surrounded by nature and the best Southwest London has to offer





**MILLSTONE HOMES**  
OF LONDON



Block A, B & C  
**3 Bed Units**

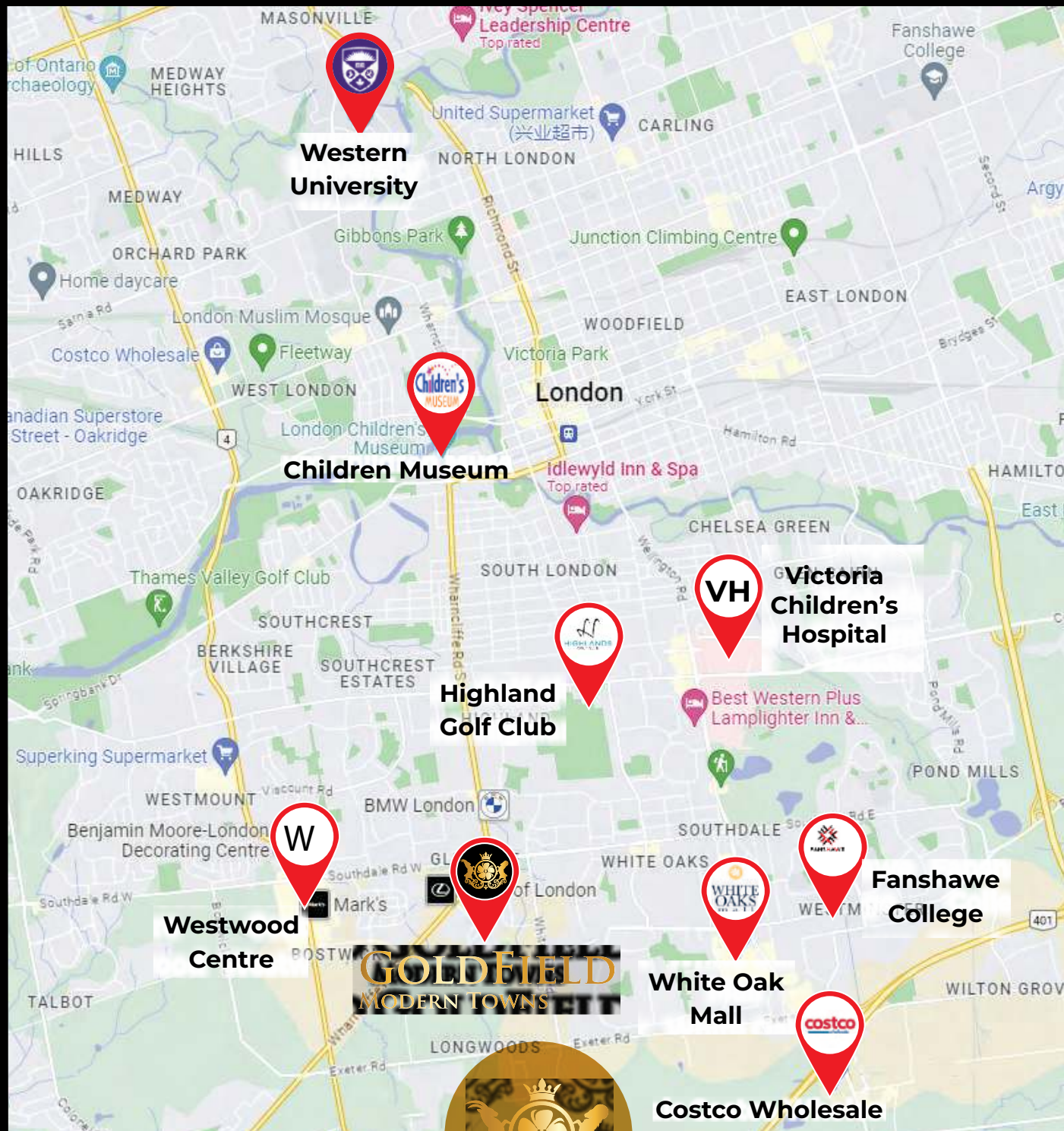


Block D  
**2 Bed Units**



# SITE PLAN





# AMENITIES

GOLDFIELD is conveniently located in the South West neighbourhood of LONDON, close to everyday amenities, schools and public transit. Surrounded by local trails and parks for year around outdoor activities.

## FOOD & DRINK

- Tiger Jack's Bar and Grill
- Golden Lake Seafood Restaurant
- Angel's Diner
- London Owen
- Mustang Sally's
- Boston Pizza
- Wendy's
- A&W Canada
- Malibu Restaurant
- Burger King
- Wok Box
- East Side Marios
- Milestones
- La Calery London
- Swiss Chalet
- Starbucks
- Build A Bowl
- Palasad
- KFC
- Pizza Pizza
- Subway
- Fat Bastard Burito
- Loblaws

## UNIVERSITY/SCHOOLS

- Western University
- Fanshawe College
- Nicholas Wilson PS
- Westminster SS
- Kensal Park FI PS
- Sir Wilfrid Laurier SS
- Saunders SS

## FOOD & DRINK

- Canadian Tire
- Michaels
- The Home Depot
- Winners
- Home Sense
- Westwood Centre
- Marshalls
- Pet Smart
- Mark's Clothing
- Mastermind Toys
- Adventures on Wonderland
- JYSK London
- Toys 'R' Us
- Sport check
- Linen chest
- Urban Barn
- Party City
- Staples
- Tepperman's London
- Leon's

## BANK

- CIBC
- TD Canada Trust
- RBC Royal Bank
- National Bank
- BMO Bank of Montreal

## HIGHWAY ACCESS

- 5 mins to HWY 402
- 9 mins to HWY 401
- 3 mins to HWY 4
- 3 mins to Southdale Rd



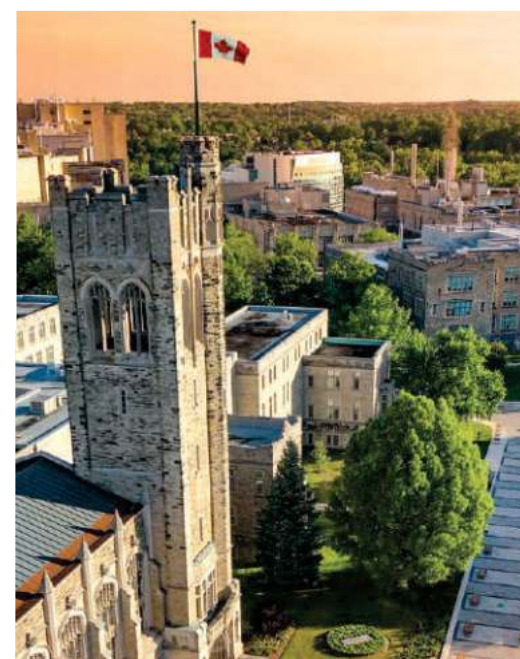


## Discover London

London, which is proudly known as the Forest city, is home to nearly 422,000 residents. Living in London offers a fantastic blend of affordability, diverse job opportunities, excellent education, and healthcare.

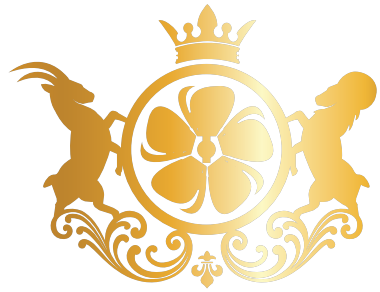
The city's manageable cost of living allows for a comfortable lifestyle. With a strong economy driven by healthcare, education, and tech sectors, career prospects are abundant. Families appreciate quality schools and a range of recreational activities.

London's thriving cultural scene, numerous parks, and community events enrich the overall living experience. Ultimately, London provides a high quality of life in a welcoming and vibrant community.



# MILLSTONE HOMES OF LONDON





# KNOW YOUR BUILDER

Millstone Homes sets the standard for luxury custom homebuilding with a thoughtfully resource-efficient approach. Carefully crafted with over two decades of excellence and innovation, we build with you in mind. As truly custom homebuilders, we tailor the entire design and build process to your unique vision and lifestyle, providing beautiful homes for intelligent living with quality craftsmanship at an exceptional value.



**PROVEN BY A TRACK RECORD OF SUCCESS.**

**PAST DEVELOPMENTS FROM THE TEAM BRINGING YOU GOLDFIELD**







**MILLSTONE HOMES**  
**OF LONDON**

[www.millstonehomes.ca](http://www.millstonehomes.ca)