



 Cambridge

1, 2 & 3 BEDROOM
MODERN LUXURY CONDOS

A large, ornate logo for "The Georgie" centered on the page. It features a dark teal background with a white outline and a gold-colored inner border. The text "THE" is in a small, white, serif font above "GEORGIE", which is in a large, white, serif font. The logo is framed by decorative, overlapping circular and scalloped patterns in gold and white.

WWW.THEGEORGIE.CA



TIMELESS LOCATION

The Georgie, the perfect fusion of history, culture, and modern living.



Contents

Building the finest
new home communities.

WEST GALT	04
COMMUNITY	06
FLOORPLANS	12
FEATURES + FINISHES	26
WARRANTY	28
THE BUILDER	30

All renderings are artist's concept and may vary.



Spectacular New Boutique Condos in Historic West Galt

The Georgie provides unparalleled convenience and access to major modern amenities, while offering charm, beautiful architectural details, and elegance inspired by the Golden Era of Hollywood.

The Georgie is your once in a lifetime opportunity to live in the heart of Cambridge with breathtaking views of the Main Street Bridge Arches, Queen's Square fountain, the magnificent gothic church spires, and the majestic homes of Old West Galt. It is no wonder West Galt continues to inspire film makers, and was the setting for "The Handmaid's Tale", Queen's Gambit, Murdoch Mysteries and more.



Own a piece of The Heart of Cambridge.

Enjoy serene walks along the Grand River, experience world class theatre performances, dine in casual or high end restaurants, and explore multitudes of unique boutiques. Immerse yourself in the culture and history of this special location while enjoying easy access to banks, transit, shopping, parks, trails, great schools, and so much more.

WEST GALT

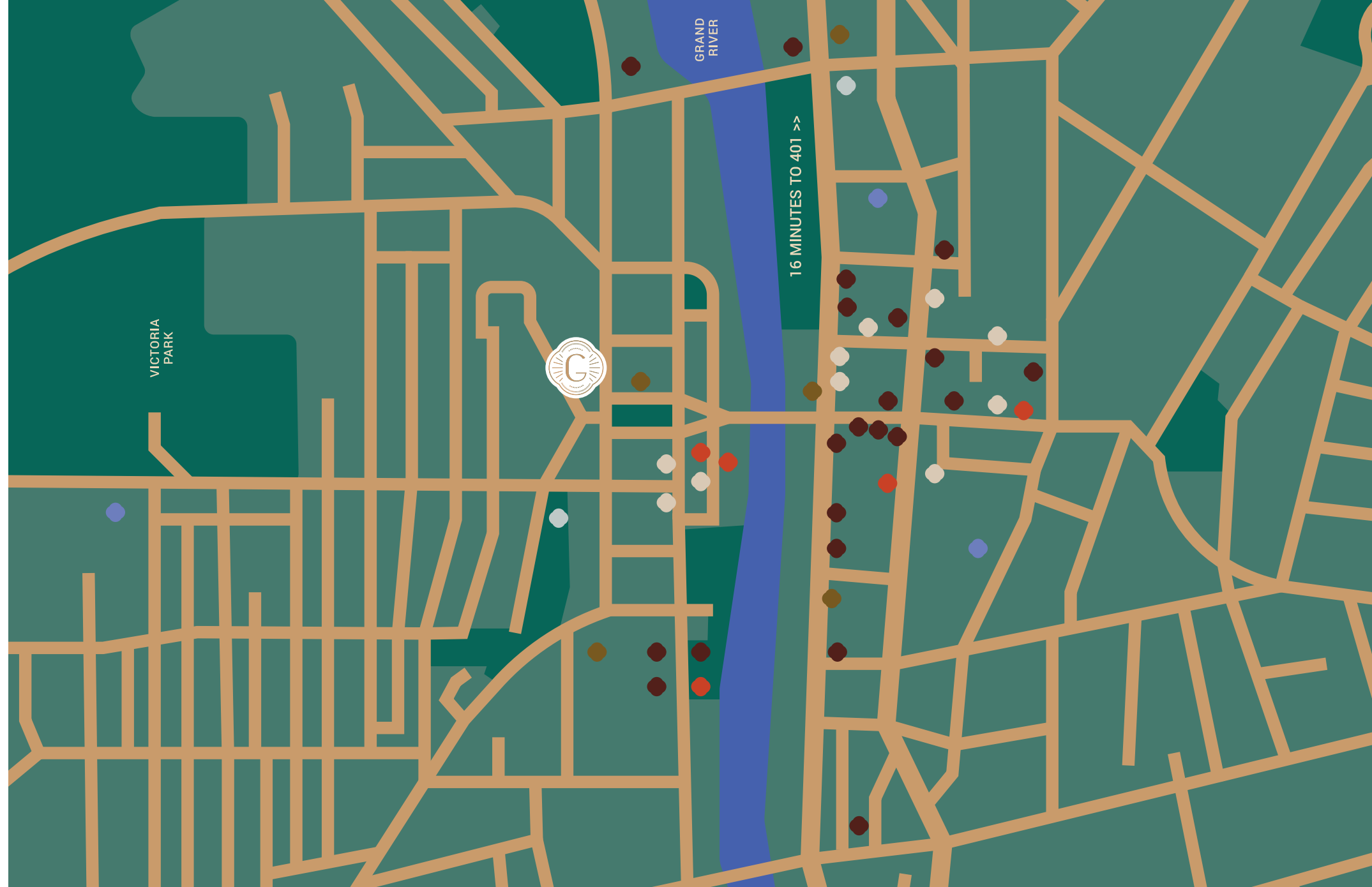
The heart of Cambridge



West Galt, located on the southwest side of Cambridge offers close access to highway 24, and the 401.

West Galt is a stunning community that boasts impressive architecture, excellent schools, a thriving real estate market robust with opportunity, a diverse range of dining and shopping options, scenic parks with majestic trees, waterfalls, trails, stately century homes, and historical buildings to explore.

The Grand River runs through the downtown, dividing the East and West sides, creating a special balance between small town charm and modern amenities, the views are picturesque and provide a never ending supply of photo opportunities.



Explore your options whether you are dining, shopping, strolling, jogging, fishing or enjoying a refreshing ice cream on a leisurely afternoon at Victoria Park. West Galt is the place where life is lived to it's fullest and lasting memories are made !!!

- RESTAURANTS
- CAFES
- ENTERTAINMENT
- RETAIL THERAPY
- GROCERY/PHARMACY
- SCHOOLS

RESTAURANTS

- Thirteen Food & Beverage
- EVO Kitchen & Bar
- Barnacle Bill's
- the LOCAL EATERY
- Latinoamerica Unida
- Foundry Tavern
- The Black Badger
- My-Thai
- 184 Main
- Old Galt Bottle Shop
- Mama Jean Kitchen
- Bombay Sizzler
- Lola Pizza

- Rati Ranjani Restaurant
- George's Fine Chinese Food
- Hungry Ninja
- Cambridge Mill
- MrBeast
- Healthy Rabbit

CAFES

- Grand Cafe
- Coffee Culture Cafe & Eatery
- Monogram Coffee Roasters
- Melville Cafe
- Java Jax Good Roast Coffee

ENTERTAINMENT

- Hamilton Family Theatre
- Breakout Escapes
- Play with Clay
- ibowl.ca Family Fun Center
- Cambridge Community Players
- Idea Exchange | Queen's Square

RETAIL THERAPY

- The Art of Home
- Molloy's Soap
- Encore Threads & Treasures
- Kelly Greens Flower & Gift Shop
- Cornerstone Home Interiors

- Giant Tiger
- Phidon Pens
- Reids Candy & Nut Shop
- Witty & Co.
- retreat
- Rookery Books
- Gifts on the Grand

GROCERY+ PHARMACY

- Food Basics
- MH Fine Foods
- Water St. Drug Mart
- Shoppers Drug Mart
- The Prescription Shoppe
- Pharmacy On Main



All renderings are artist's concept and may vary.

WELCOME HOME

A variety of thoughtfully designed floor plans offer you many options to choose from. Whether your lifestyle encompasses entertaining, working in the comfort of your inspiring new home, or savoring the joys of retirement, there is an ideal floor plan for your life.





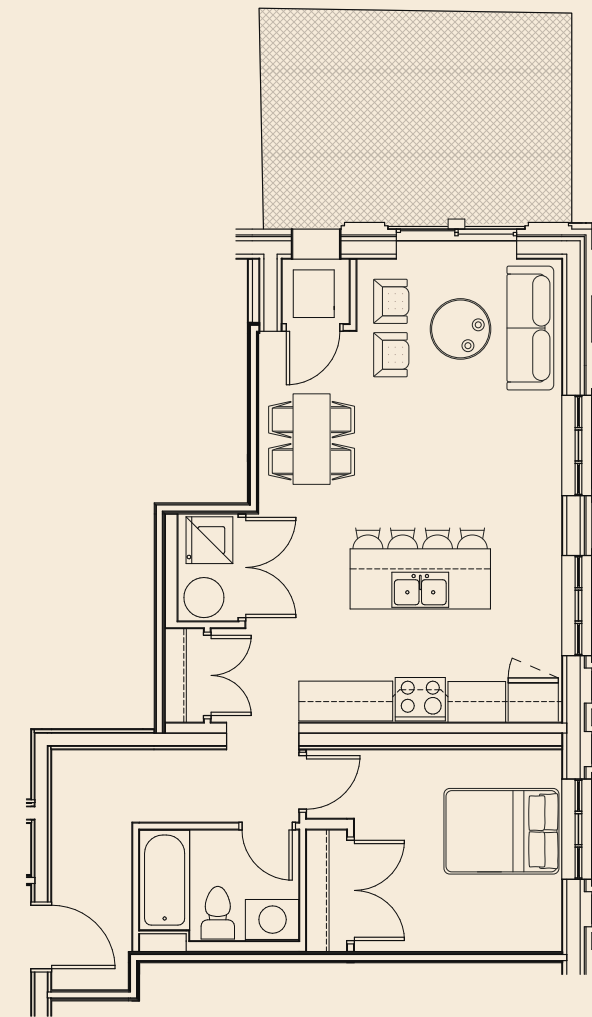
Each unit boasts 9 foot ceilings, pot lights, large windows, sun filled rooms, elegant modern finishes, quartz counter tops, soft close cabinets and doors, en-suite laundry and so much more.



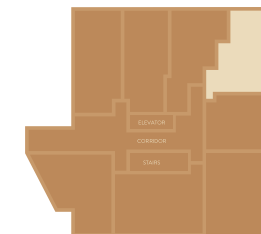


All renderings of exteriors are artist's concept and may vary slightly.

Keaton



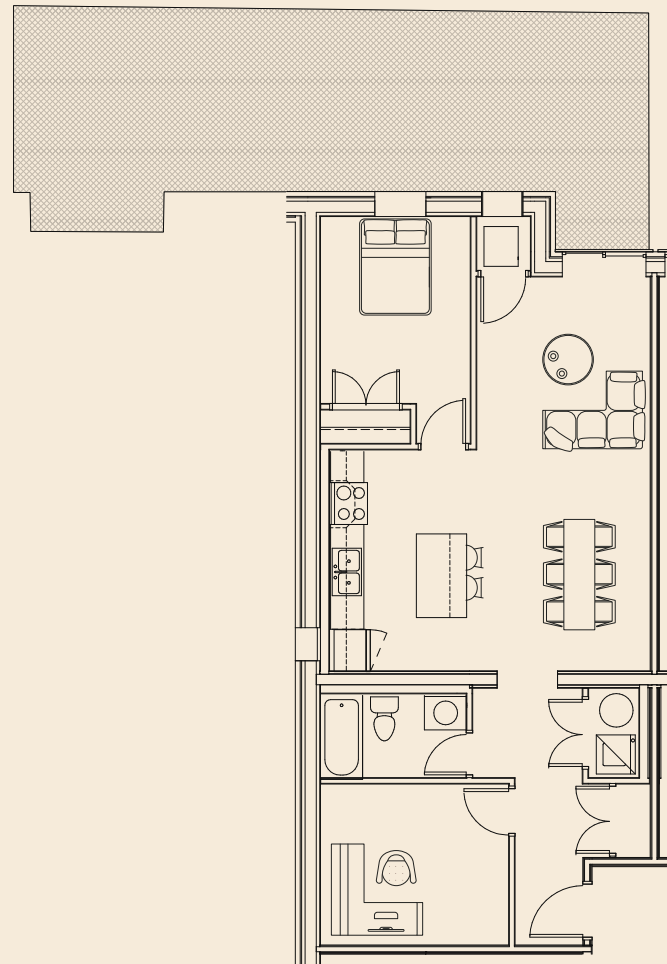
SF	804
BEDS	1
BATHS	1



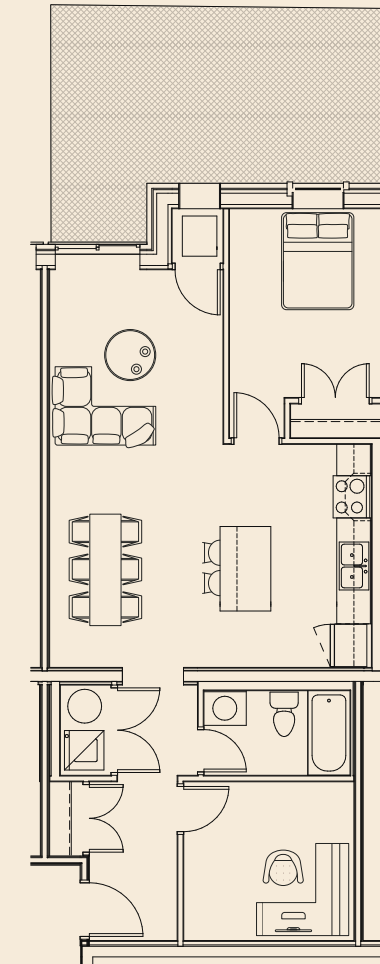
LOCATED ON:
FLOOR 1

All material presented herein is intended for information purposes only. While this information is believed to be correct it is represented subject to errors, omissions, changes, or withdrawal without notice.

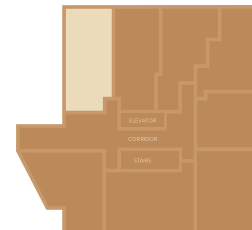
Chaplin B



Chaplin A

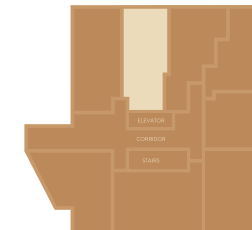


SF	943
BEDS	1 + DEN
BATHS	1



LOCATED ON:
FLOOR 1

SF	859
BEDS	1 + DEN
BATHS	1

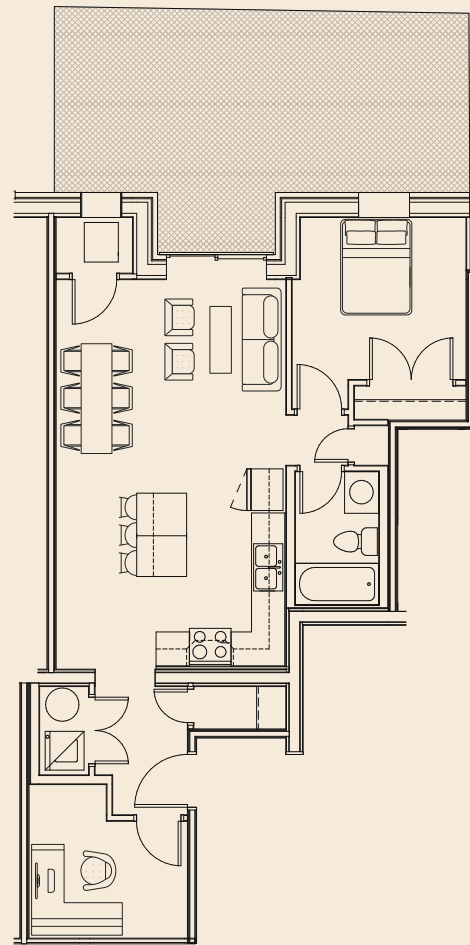


LOCATED ON:
FLOOR 1

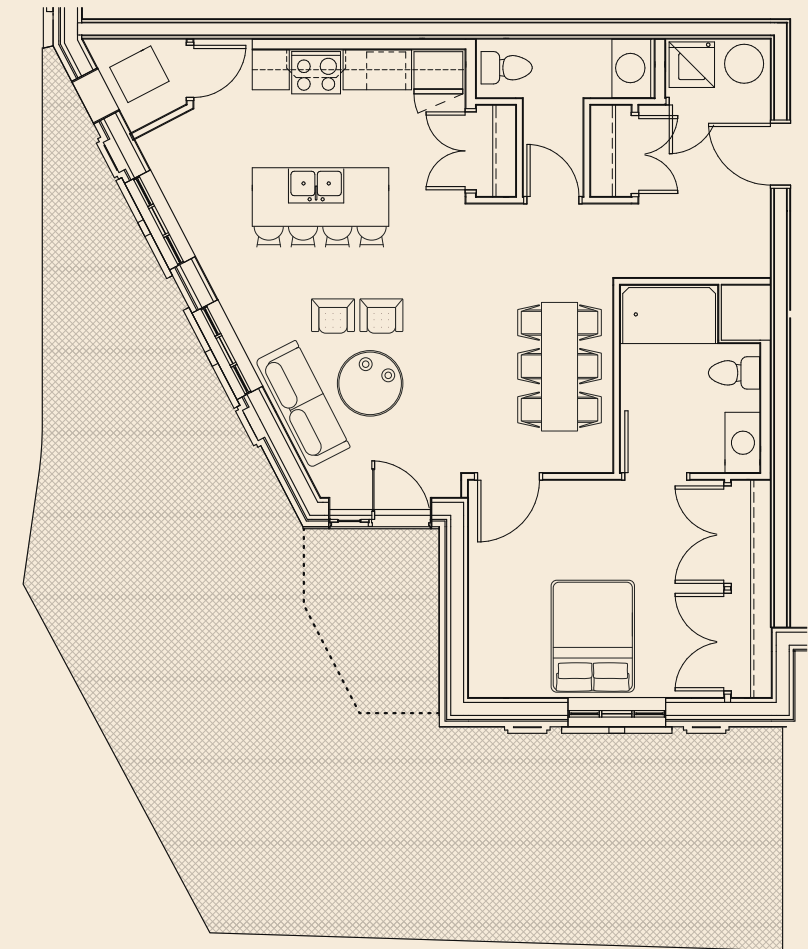
All material presented herein is intended for information purposes only. While this information is believed to be correct it is represented subject to errors, omissions, changes, or withdrawal without notice.

All material presented herein is intended for information purposes only. While this information is believed to be correct it is represented subject to errors, omissions, changes, or withdrawal without notice.

Chaney



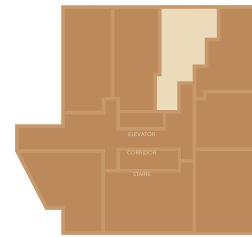
Brooks



FLOORS
2, 3, 4
BALCONY

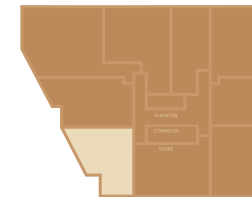


SF	801
BEDS	1+DEN
BATHS	1



LOCATED ON:
FLOOR 1

SF	979
BEDS	1
BATHS	1.5

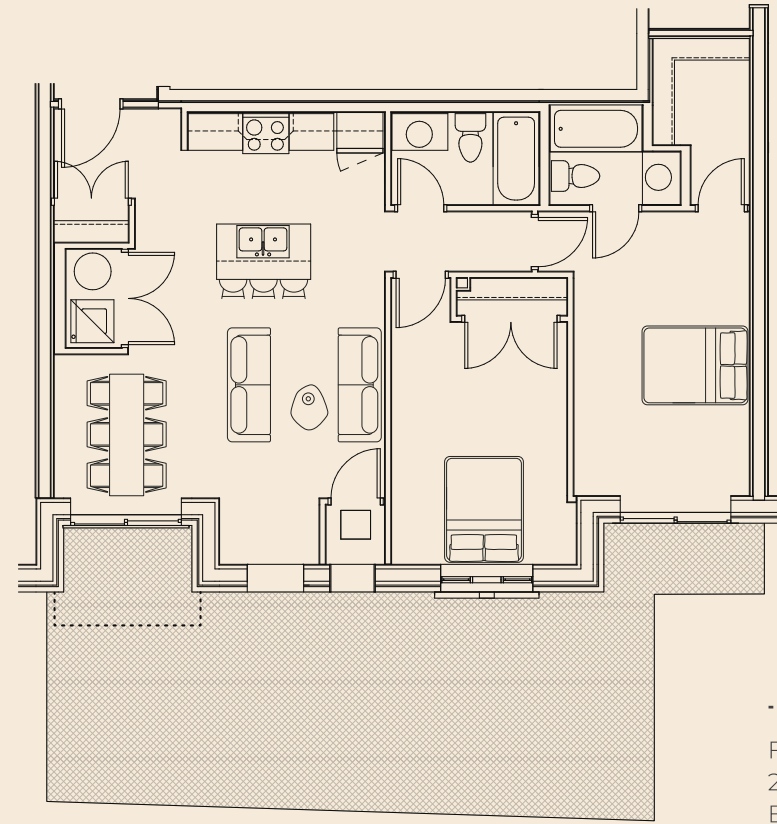


LOCATED ON:
FLOORS 1, 2, 3, 4

All material presented herein is intended for information purposes only. While this information is believed to be correct it is represented subject to errors, omissions, changes, or withdrawal without notice.

All material presented herein is intended for information purposes only. While this information is believed to be correct it is represented subject to errors, omissions, changes, or withdrawal without notice.

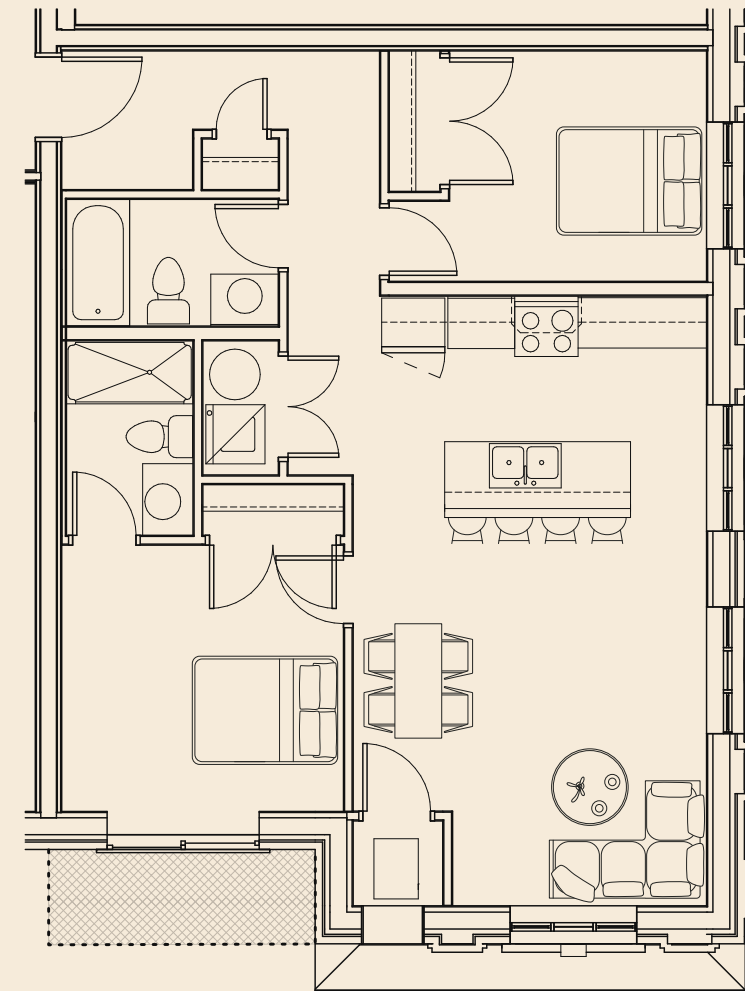
Garbo



FLOORS
2, 3, 4
BALCONY



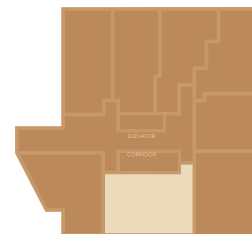
Gaynor



FLOORS
2, 3, 4
BALCONY



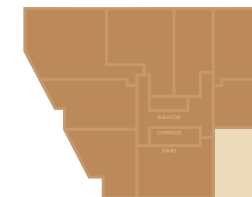
SF	995
BEDS	2
BATHS	2



LOCATED ON:
FLOORS 1, 2, 3, 4

All material presented herein is intended for information purposes only. While this information is believed to be correct it is represented subject to errors, omissions, changes, or withdrawal without notice.

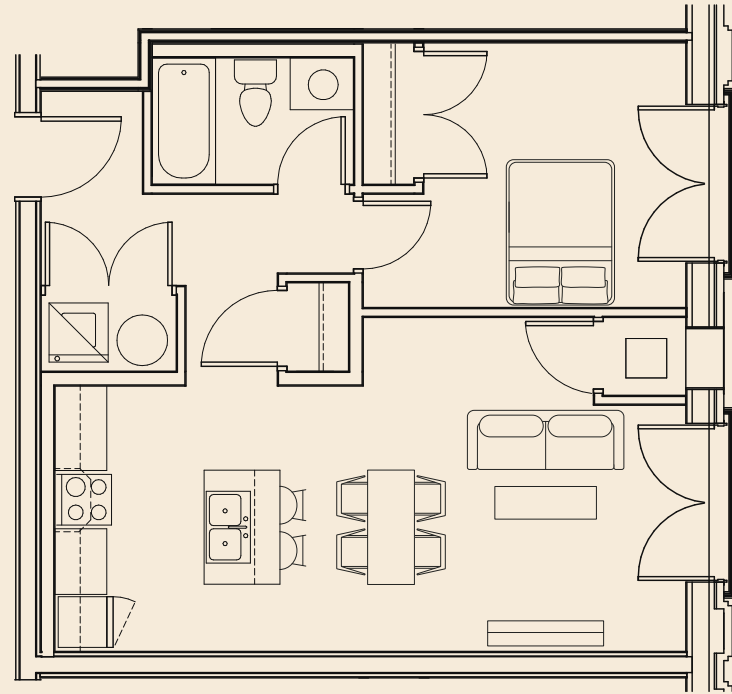
SF	954
BEDS	2
BATHS	2



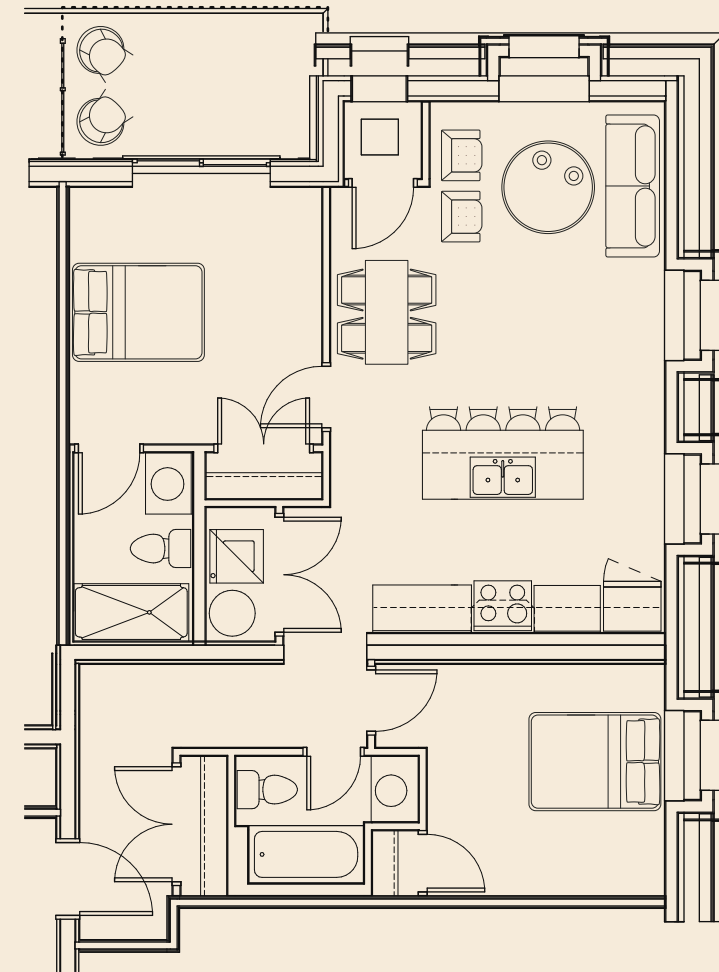
LOCATED ON:
FLOORS 1, 2, 3, 4

All material presented herein is intended for information purposes only. While this information is believed to be correct it is represented subject to errors, omissions, changes, or withdrawal without notice.

Gilbert

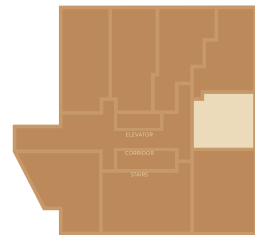


Ralston



LOCATED ON:

FLOORS 1, 2, 3, 4



SF	684
BEDS	1
BATHS	1

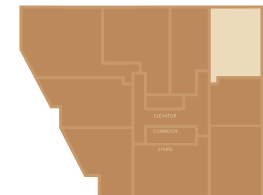
All material presented herein is intended for information purposes only. While this information is believed to be correct it is represented subject to errors, omissions, changes, or withdrawal without notice.

SF	954
BEDS	2
BATHS	2

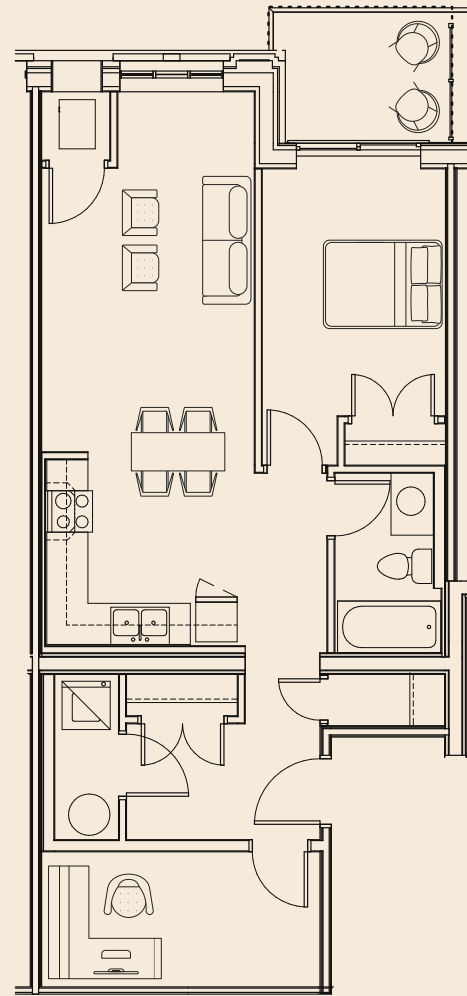
All material presented herein is intended for information purposes only. While this information is believed to be correct it is represented subject to errors, omissions, changes, or withdrawal without notice.

LOCATED ON:

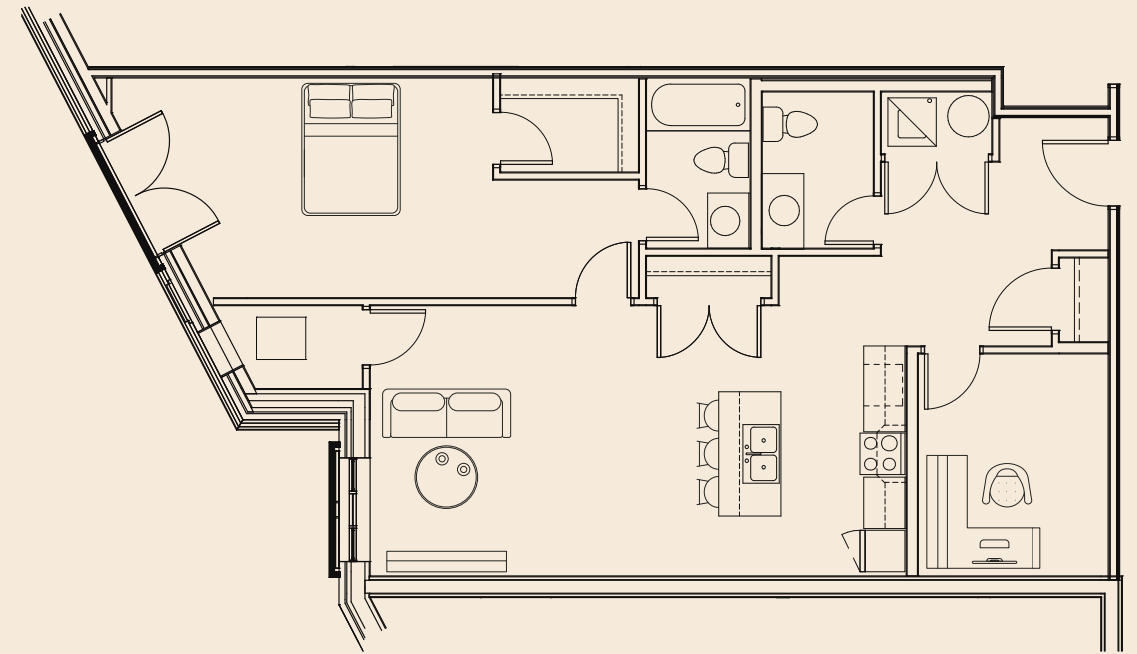
FLOORS 2, 3, 4



Davies



Philbin



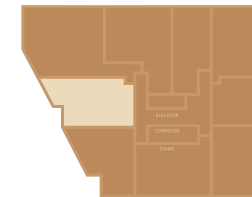
SF	798
BEDS	1 + DEN
BATHS	1



LOCATED ON:
FLOORS 2, 3, 4

All material presented herein is intended for information purposes only. While this information is believed to be correct it is represented subject to errors, omissions, changes, or withdrawal without notice.

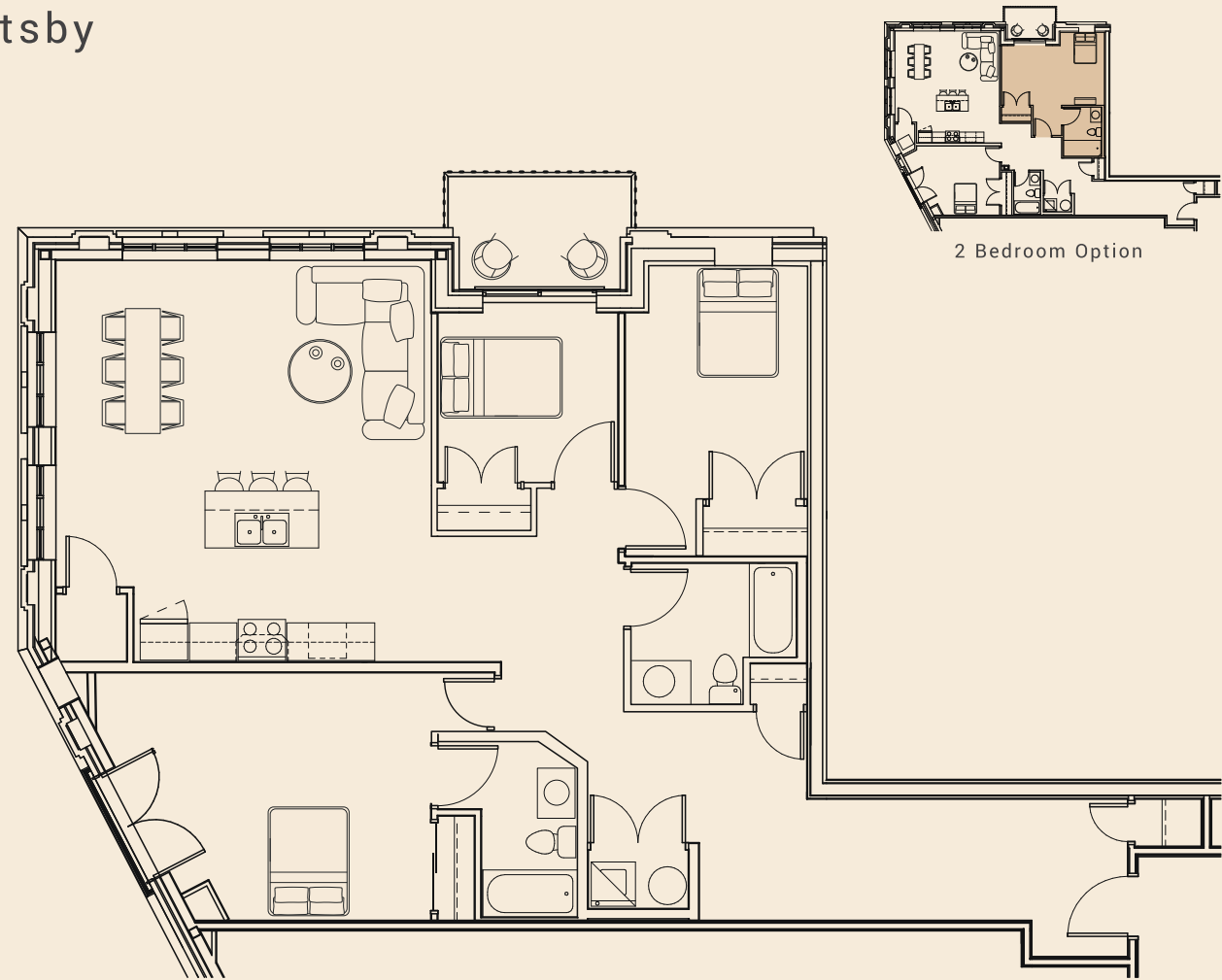
SF	1,057
BEDS	1 + DEN
BATHS	1.5



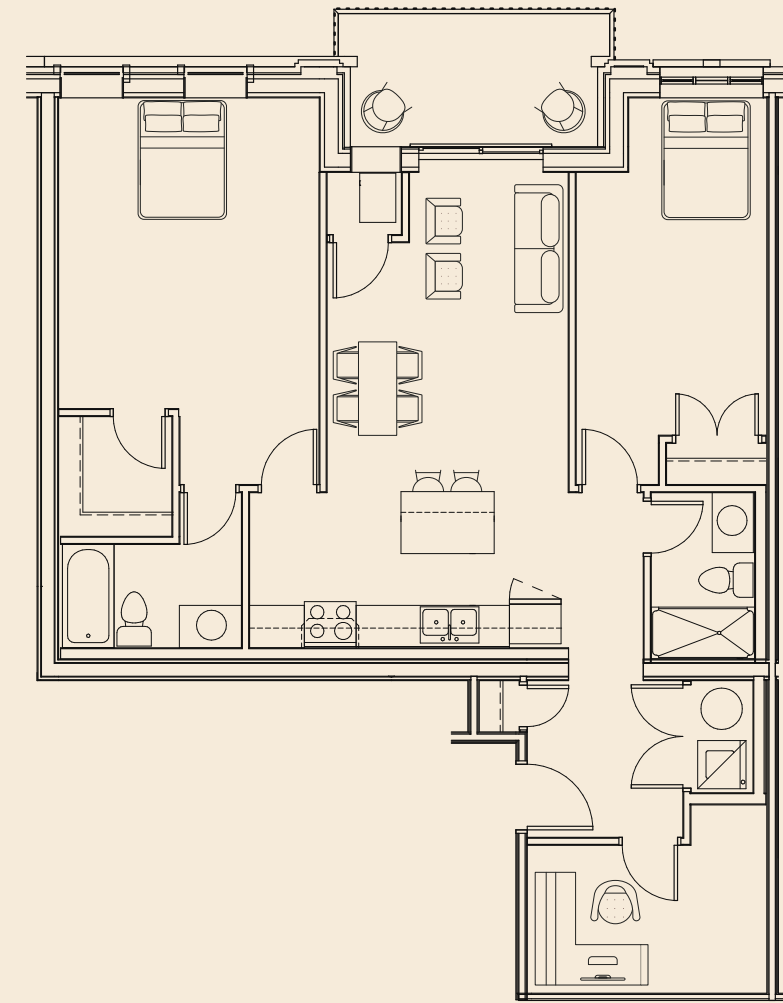
LOCATED ON:
FLOORS 2, 3, 4

All material presented herein is intended for information purposes only. While this information is believed to be correct it is represented subject to errors, omissions, changes, or withdrawal without notice.

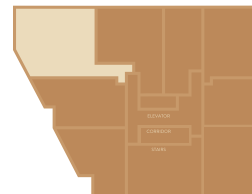
Gatsby



Fairbanks



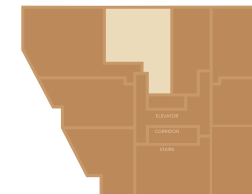
SF	1,551
BEDS	3
BATHS	2



LOCATED ON:
FLOORS 2, 3, 4

All material presented herein is intended for information purposes only. While this information is believed to be correct it is represented subject to errors, omissions, changes, or withdrawal without notice.

SF	1,203
BEDS	2 + DEN
BATHS	2



LOCATED ON:
FLOORS 2, 3, 4

All material presented herein is intended for information purposes only. While this information is believed to be correct it is represented subject to errors, omissions, changes, or withdrawal without notice.

STANDARD FEATURES & FINISHES



Items in **BOLD** are premium features at no extra cost.

The Building

- New 5 story building architecturally designed to blend well with existing neighborhood
- Concrete patio as per applicable plan
- All windows are high efficiency Low E Argon gas filled maintenance free vinyl clad windows
- Insulated patio door, as per applicable plan
- **Rooftop amenity area with panoramic views of Historic Galt**
- **One parking space included in heated and secured underground garage, with bicycle parking and elevator access**
- **Smart device compatible security entrance**
- **Designer lobby with convenient elevator**
- **Convenient commercial storefront on ground floor of building**
- **Unique property built into natural landscape with trees and changing elevations**

Kitchen & Bath

- Quality kitchen and bathroom cabinets from Builder's selections
- **Stone countertops throughout with under mount sinks**
- Opening in cabinetry for future dishwasher and rough-in provided.
- **Soft close cabinet doors and drawers**
- **Two pots and pans drawers**
- **Stainless steel slim microwave/vent hood, vented to the exterior**
- Large mirrors above vanities
- **Quality white plumbing fixtures with designer brushed nickel faucets (low water consumption toilet supplied with insulated tank)**
- **White acrylic 1 piece tub with tile surround for easy maintenance**
- **Units with ensuite baths feature tiled showers with glass doors and tile base**
- Extra quiet exhaust fan vented to the exterior in all bathrooms and powder rooms

Interior Features

- Generous sized windows with lots of natural light
- Brushed Nickel interior door hardware. 2-Panel interior doors with color matching closet doors, as per applicable plan painted semi-gloss white.
- Deadbolts on all entry doors
- **Smooth ceilings throughout**
- Interior walls to be painted with one coat tinted primer and one finish coat of quality flat latex paint. Paint colour from Builder's samples. One paint colour throughout.
- **Carpet free, high quality luxury vinyl plank and tile from builders selections throughout including bedrooms**
- **All units feature in-suite laundry**

Electrical & Mechanical Features

- 100 AMP service with circuit breaker panel and copper wire throughout
- **LED potlights throughout kitchen, hallways, and all living spaces**
- USB outlet in kitchen
 - Dedicated electrical outlet for refrigerator.
- Electrical outlets at counter level for small appliances
- Heavy duty stove and dryer connections
- A total of 2 outlets to be used in any combination of telephone or cable outlets
- 1 exterior weather proof receptacle on private amenity connected to a Ground Fault Interrupt safety switch, as per applicable plan
- Energy efficient heating and air conditioning with in-suite controls
- Natural Gas hot water heater provided, supplied by Builder. Rental contract to be set up by purchaser.



WARRANTY

Introducing TARION: Your Shield of Assurance with Crescent Homes. TARION is a trusted authority in new home warranties, ensuring your investment is safeguarded from inception to completion. With Crescent Homes, you're not just purchasing a property; you're securing peace of mind.

Our partnership with TARION means you're covered against unforeseen structural defects and construction deficiencies, giving you the confidence to embark on this exciting journey worry-free. From the foundation, to the finishing touches, rest assured that Crescent Homes stands by its commitment to quality and excellence, supported by TARION's renowned warranty program.

Invest in your future with confidence and let Crescent Homes and TARION turn your dream home into a reality, backed by unparalleled protection and assurance.



All renderings are artist's concept and may vary.



THE BUILDER

Crescent Homes is dedicated to fostering a high-quality lifestyle. Our commitment is evident through our exceptional locations, innovative products, outstanding customer service, and unbeatable prices in the market.

Our team collaborates closely with every buyer to guarantee that the home is constructed according to their preferences and perfectly meets their family's requirements. We are firmly dedicated to the process of building.

It goes beyond constructing new homes; we also prioritize building trust, relationships, and providing peace of mind. We possess extensive knowledge and genuine enthusiasm for every facet of our work. Our goal is to effectively communicate this knowledge and passion to home buyers, ensuring they are well-informed and inspired.

We know how important your new home is to you; that's why each home we build is so important to us.





16-20 GEORGE STREET, NORTH
CAMBRIDGE, ON

COMMUNITY BY



WWW.CRESCENTHOMES.CA

BUILDER SALES TEAM



TEAM AMIT AIRI

WWW.AMITAIRI.COM

WWW.THEGEORGIE.CA